



Raffles Marina Optimist Regatta 2023

27 – 28 MAY 2023 (Optimist Gold Fleet / Optimist Silver Fleet)
Raffles Marina, SINGAPORE

SAILING INSTRUCTIONS

ORGANISING AUTHORITY

The Raffles Marina Optimist Regatta is organised by Raffles Marina

1 RULES

- 1.1 The event will be governed by the rules as defined in *The Racing Rules of Sailing (RRS)*. Other documents under RRS Definition: Rule (g) includes:
 - 1.1.1 [DP] The Support Team Regulations (STR) in NoR/SI Addendum D will apply.
 - 1.1.2 [DP][NP] COVID-19 Zone Areas Assigned for Competitors and Support Persons in NoR/SI Addendum E will apply.
 - 1.1.3 [DP] The Maritime and Port Authority of Singapore (MPA) Regulations wherever they might apply.
- 1.2 National authority prescriptions will apply. For RRS 40 Personal Floatation Devices, add on after the rule the following: "Singapore Sailing Federation prescribes that every boat shall carry life-saving equipment conforming to government regulations that apply in the racing area."
- 1.3 In all rules governing this event, the notations:
 - 1.3.1 The notation [SP] means that a standard penalty may be applied by the Race Committee without a hearing or a discretionary penalty applied by the Protest Committee with a hearing. This changes RRS 63.1 and A5.
 - 1.3.2 The notation [NP] means that a boat may not protest another boat for breaking that rule. This changes RRS 60.1(a).
- 1.4 [DP] The penalty for a breach of the class rules may, at the discretion of the Protest Committee, be less than a disqualification.
- 1.5 [NP] The infringement of RRS Appendix G, IDENTIFICATION ON SAILS, shall not be grounds for protests by a boat.
- 1.6 RRS Appendix G3, CHARTERED OR LOANED BOATS, will apply, subjected to the Race Committee approving her sail identification before the first race.
- 1.7 If there is a conflict between languages the English text will take precedence.

2 NOTICES TO COMPETITORS

Notice to Competitors will be posted on the Official Notice Board located in front of the Race Office. Notices may also be posted online <https://www.racingrulesofsailing.org/documents/5902/event>
Failure to access a notice online will not be grounds for redress. This changes RRS 62.1(a). 2.1



3 CHANGES TO SAILING INSTRUCTIONS

Any change to the Sailing Instructions will be posted at least 30 minutes before the displaying of flag D on the day it will take effect, except that any change to the schedule of races will be posted no later than 30 minutes after the end of the protest time limit on the day before it will take effect.

4 SIGNALS MADE ASHORE

- 4.1 Signals made ashore will be displayed on the official flag staff located at the launching ramp of the Raffles Marina.
- 4.2 When flag "AP" is displayed ashore, "1 minute" is replaced with not less than 30 minutes in the race signal AP.
- 4.3 [SP][NP] Flag D with one sound means: "The warning signal will not be made before the scheduled time or less than 30 minutes after flag D is displayed, whichever is later. Boats shall not launch until this signal is made."

5 SCHEDULE

- 5.1 The schedule of activities will be as follows:

27 May (Saturday)		
Time	Activity	Location
0800h	Collection of ribbons (Gold Fleet), t-shirts, sign-out	Pool Deck
0900h	Competitors' and coaches' briefing	Theatrette
1100h	1st warning signal	On Water
1700h	Sign-in/ Collection of snack & drink	Pool Deck
28 May (Sunday)		
0800h	Sign-out	Pool Deck
1100h	1st warning signal	On Water
1700h	Sign-in/ Collection of snack & drink	Pool Deck
1800h	Prize presentation (For winners only)	Pool Deck

- 5.2 Number of Races:

<i>Fleet Race</i>	<i>No. of Races</i>	<i>Max Races per day</i>
Optimist Gold Fleet	8	4
Optimist Silver Fleet	6	4

- 5.3 On the last scheduled day of racing, no warning signal will be made after 1700h.

6 CLASS FLAG

<i>Fleet Race</i>	<i>Logo</i>	<i>Background</i>
-------------------	-------------	-------------------



Optimist Gold Fleet	Optimist	Yellow
Optimist Silver Fleet	Optimist	White

7 RACING AREAS

At the waters in front of Raffles Marina. See addendum A

8 THE COURSES AND MARKS

- 8.1 The diagrams in SI Addendum B show the courses, the course designations, the approximate angles between legs, the order in which marks are to be passed, and the side on which each mark is to be left.
- 8.2 No later than the warning signal, the Race Committee signal vessel will display a board designating the course to be sailed and, the approximate compass bearing of the first leg.
- 8.3 To change the next leg of the course, the Race Committee will (a) lay a new mark, (b) move the finishing line, or (c) move the leeward gate. When a new mark is laid, the original mark will be removed as soon as practicable. When in a subsequent change a new mark is replaced, it will be replaced by an original mark.
- 8.4 Marks will be as follows:

<i>Fleet</i>	<i>Marks 1</i>	<i>Marks 2s/2p</i>	<i>New Mark</i>	<i>Starting Marks</i>	<i>Finishing Marks</i>
Gold	Yellow Conical Buoy	Yellow Cylinder stick	Pink Buoy	Race Committee Vessels	Blue Oval Buoy
Silver	Yellow Cylinder stick	Yellow Cylinder stick	Pink Buoy	Race Committee Vessels	Blue Oval Buoy

- 8.5 In the event that a gate mark is missing and has not been replaced with an object displaying flag M, the remaining mark shall be rounded to port.

9 THE START

- 9.1 The starting line will be between a staff displaying an orange flag on the Race Committee signal vessel at the starboard end and either
- (a) the course side of the port-end starting mark, or
 - (b) a staff displaying an orange flag on the Race Committee vessel at the port end.
- 9.2 [DP][NP] Boats whose warning signal has not been made shall avoid the starting area during the starting sequence for other races and shall stay at least 50 metres away from boats that are starting or manoeuvring around the starting area to prepare for the start.
- 9.3 A boat that does not start within 4 minutes after her starting signal will be scored Did Not Start (DNS) without a hearing. This changes RRS A5.1 and A5.2.
- 9.4 To alert boats that a race or sequence of races will begin soon, the orange starting line flag will be displayed with one sound at least five minutes before a warning signal is made.

10 THE FINISH



- 10.1 The finishing line will be between a staff displaying a blue flag on the Race Committee vessel and the course side of the nearby finishing buoy.
- 10.2 [SP] When boats are finishing, boats who have finished shall avoid the finishing area, keeping well clear of all boats racing, and shall not act to interfere with a boat that has not finished.

11 PENALTY SYSTEM

- 11.1 RRS Appendix P, Special Procedures for RRS 42, will apply as changed by SI 14.2.
- 11.2 RRS P2.3 will not apply and RRS P2.2 is changed so that it will apply to any penalty after the first one.
- 11.3 Penalties for breaches of rules marked [SP] will be 5% of the score for Did Not Finish (DNF) for each infringement, rounded to the nearest whole number (0.5 rounded upward). The scores of other boats shall not be changed; therefore, two boats may receive the same score. However, the penalty shall not cause the boat's score to be worse than the score for DNF. The Race Committee may protest a boat when they consider the standard penalty to be inappropriate. A boat that has been penalised with a standard penalty can neither be protested for the same incident by another boat nor can another boat request redress for this Race Committee action. This changes RRS 60.1, 63.1 and A5.
- 11.4 When a penalty is given under, SI 14.3 or rules marked [DP] before a race is started, the penalty will remain if that race is restarted or re-sailed. This changed RRS 36.
- 11.5 For the Optimist class, a graded penalty system in SI Addendum C will apply.

12 TIME LIMITS AND TARGET TIMES

- 12.1 The Mark 1 Time Limit, Race Time Limit (see RRS 35), the Finishing Window and the race target times, in minutes, are as follows:

<i>Class/Fleet/ Division</i>	<i>Time limit</i>	<i>Mark 1 time limit</i>	<i>Finishing window</i>	<i>Target time</i>
Optimist (Gold)	60	25	20	45
Optimist (Silver)	60	25	30	45

- 12.2 If no boat has passed the first mark within the Mark 1 Time Limit, the race will be abandoned.
- 12.3 Failure to meet the target time will not be grounds for redress. This changes RRS 62.1(a).
- 12.4 For all classes, boats failing to finish within the time stated in the Finishing Window shall be scored Did Not Finish (DNF) without a hearing. This changes RRS 35, A5.1 and A5.2.

13 SCORING

- 13.1 The Low Point System of RRS Appendix A will apply.
- 13.2 One (1) race per class/fleet is required to be completed to constitute the event.
- 13.3 When fewer than four (4) races have been completed, a boat's event score will be the total of her race scores. When four or more races have been completed, a boat's event score will be the total of her race scores excluding her worst score.
- 13.4 To request correction of an alleged error in posted race or series results, a boat may submit a scoring enquiry form available online at



<https://www.racingrulesofsailing.org/penalties/5902/event> by clicking on the blue "+" and then "Scoring Enquiry".

14 HEARING REQUESTS

- 14.1 Add to RRS 61.1(a), "To inform the Race Committee of the boat(s) being protested, the boat intending to protest shall approach the Race Committee vessel at the finishing line as soon as possible after finishing or retiring, and shall hail the protested boat(s) sail number(s).
- 14.2 For each class or fleet, the protest time limit is 60 minutes after the last boat has finished the last race of the day, or the Race Committee signals no more racing today, whichever is later. The time will be posted on the Official Notice Board.
- 14.3 Hearing request forms are available online at <https://www.racingrulesofsailing.org/documents/5902/event> by clicking on the blue "+" and then "File a Hearing Request". Protests and requests for redress or reopening shall be submitted online, within the appropriate time limit. If a protest or request is not received by the system and does not display on the pending hearing list, then it has not been delivered. This changes RRS 61.3 and 63.1.
- 14.4 Notices will be posted no later than 30 minutes after the protest time limit to inform competitors of hearings in which they are parties or named as witnesses. Hearings will be held in the Jury room located at the Board Room 2nd Level Main Lobby, beginning at the time posted.
- 14.5 A list of boats that have been penalised for breaking RRS 42 under Appendix P will be posted at <https://www.racingrulesofsailing.org/documents/5902/event>

15 [DP][NP] SAFETY REGULATIONS

- 15.1 RRS 40.1 shall apply at all times while afloat.
- 15.2 [SP] Check-Out and Check-In Procedures:
 - 15.2.1 Before launching on each scheduled racing day, a competitor from each boat shall individually Check-Out, by personally signing on the forms provided at the Race Secretariat desk at the pool side. This also applies when boats are relaunched after returning ashore following the application of NoR 7.4.
 - 15.2.2 Upon returning to shore after racing, a competitor from each boat shall individually Check-In, by personally signing on the forms provided at the Race Secretariat desk at the pool side, as soon as possible but no later than the protest time limit. This also applies when boats return ashore following the application of NoR 7.4.
- 15.3 A boat that retires from a race shall notify the Race Committee at the first reasonable opportunity before leaving the Race Area.
- 15.4 When flags AP over H or N over H are displayed from a Race Committee vessel in their respective Race Area, all boats in that Race Area shall immediately return ashore and wait there for further signals. This changes race signals AP over H and N over H.

16 PRIZES

See NoR 13

17 [DP][NP] MEDIA RIGHTS, CAMERAS AND ELECTRONIC EQUIPMENT

- 17.1 By participating in this event, competitors and their support persons automatically grant to the Organising Authority and any event sponsors, the right in perpetuity to make, use, and show, from



time to time at their discretion, any motion pictures and live, taped, or filmed television and other reproductions of them during the period of the event without compensation.

- 17.2 Competitors and their support persons may be required for media interviews during the period of the event.

18 [NP] LIABILITY AND INSURANCE

- 18.1 Raffles Marina, owners, affiliates, officers, employees, agents, committee persons and race officials acting in the official capacities do not accept liability for loss of life or property damage, or personal injury or damage caused by or arising out of the event. Competitors take part in the event at the own risk.
- 18.2 The establishment of the Notice of Race and Sailing Instructions in no way limits or reduces the complete and unlimited responsibilities of a competitor being solely and entirely responsible for the management of a boat he is sailing.
- 18.3 All competitors shall maintain their boats in a safe and seaworthy condition.
- 18.4 A competitor shall be of good health and a competent sailor capable of racing in open water in all conditions including strong winds.
- 18.5 At-fault occurrences to other boats are the responsibility of the helmsman. Competitors are not covered by any liability insurance provided by the Organising Authority and should provide their own coverage for personal goods and liability protection. The Organising Authority recommends that competitors consult their own insurance carriers to assure they are covered at this event and regarding additional personal liability insurance coverage.
- 18.6 A competitor is recommended to have personal accident and health insurance that covers him while attending the event and while racing.
- 18.7 The Organising Authority is not responsible for verifying the status or validity of certificates.

19 RISK STATEMENT

RRS 3 states: 'The responsibility for a boat's decision to participate in a race or to continue to race is hers alone.' By participating in this event each competitor agrees and acknowledges that sailing is a potentially dangerous activity with inherent risks. These risks include strong winds and rough seas, sudden changes in weather, failure of equipment, boat handling errors, poor seamanship by other boats, loss of balance on an unstable platform and fatigue resulting in increased risk of injury. **Inherent in the sport of sailing is the risk of permanent, catastrophic injury or death by drowning, trauma, hypothermia or other causes.**

20 INDEMNIFICATIONS

To the fullest extent permitted by law, each competitor agrees to indemnify and hold Raffles Marina, owners, affiliates, officers, employees, agents, committee persons and race officials acting in the official capacities, harmless from any third-party claim to the extent arising from a competitor's acts or omissions.

21 FURTHER INFORMATION

Please contact the Raffles Marina(RM) for any question regarding this event via the following:

Raffles Marina Ltd
10 Tuas west Drive
Singapore (638404)

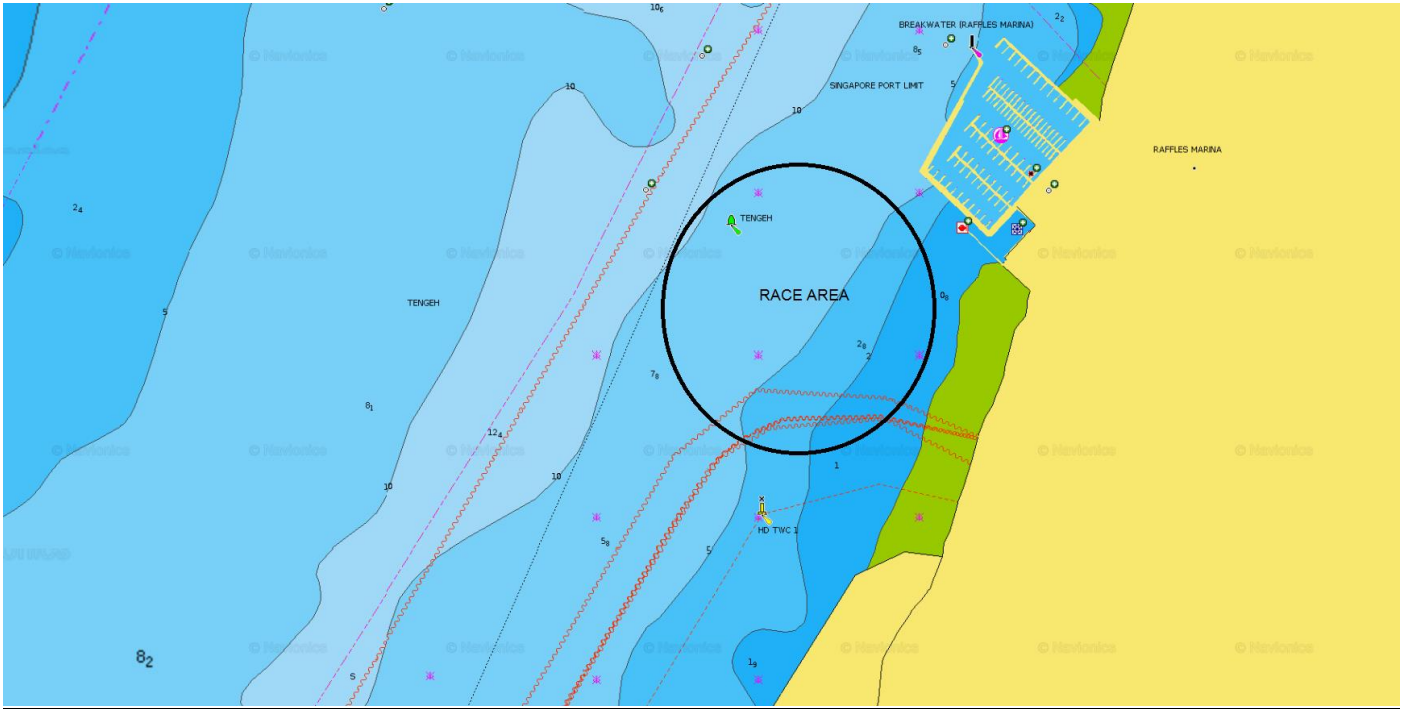


Tel :68619000

dmo@rafflesmarina.com.sg



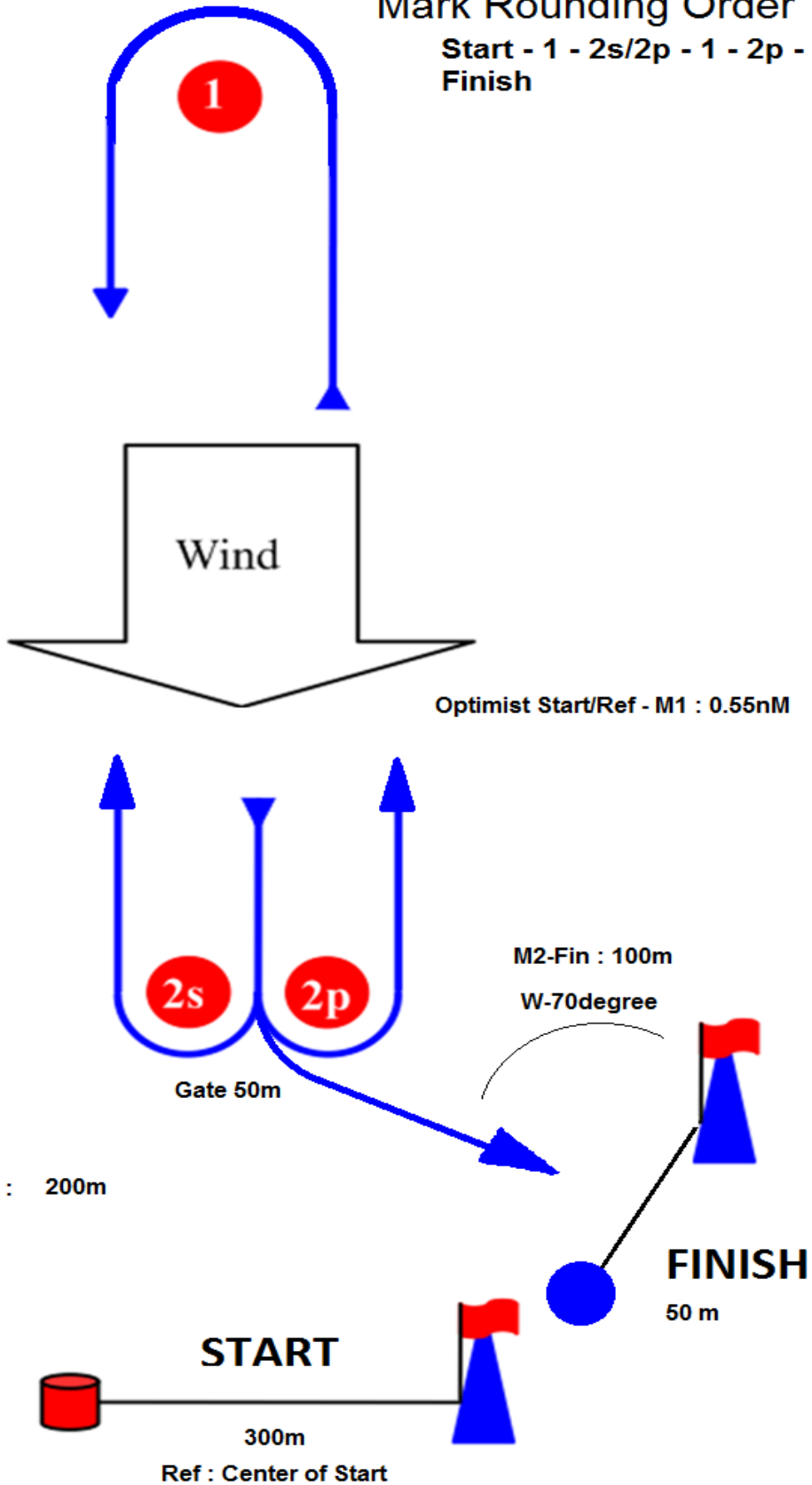
Addendum A – Racing Area



Addendum B – The Course

Mark Rounding Order

**Start - 1 - 2s/2p - 1 - 2p -
Finish**





Addendum C – Optimist Graded Penalty System

[CR: Optimist class rules]

Minor Penalties

Penalty approximately equal to 5% of fleet

- Breaches of NoR/SI Safety Regulations if no danger was involved
- Not displaying the coloured ribbon or incorrect ribbon

Intermediate Penalties

Penalty equivalent to 10% of fleet

- Bailer not attached to the hull (CR 4.3a)
- Paddle not attached to the hull (CR 4.3c)
- Daggerboard not attached to the hull (CR 3.3.4)
- Painter not attached to mast step (CR 4.3b)
- Whistle not attached to personal flotation device (CR 4.2a)
- One sail tie 5 mm or more loose (CR 6.6.3.4)
- Two sail ties 3 mm or more loose (CR 6.6.3.4)
- Accidental loss of sail tie (CR 6.6.3.4)
- Sailing across a race in progress before starting or after finishing
- Out of the waiting area and/or interfering with boats starting in another fleet or division
- Breaches of NoR/SI Trash Disposal

Major Penalties

Penalty equivalent to 30% of fleet

- No bailer, paddle or painter in boat (CR 4.3)
- No whistle (CR 4.2a)
- No lanyard, locking device or other arrangement to attach mast to the hull (CR 3.5.2.11)
- Sail outside limits of bands (CR 3.5.2.7)
- Two ties 5 mm or more loose (CR 6.6.3.4)
- Three or more ties 3 mm or more loose (CR 6.6.3.4)
- Throat, tack or clew eyelet 3 mm or more loose (CR 6.6.3.4)
- Repeat of intermediate penalty infringement

Disqualification

Penalty DSQ

- Use of uninspected equipment
- Use of unapproved fittings
- Repeat of major penalty infringement



Addendum D – Support Team Regulations (STR)

1. GENERAL

- 1.1 These Support Team Regulations (STR) shall apply at all times during the period of the event while support persons are at the venue, ashore or afloat on the field of play (Racing Area).
- 1.2 For the purposes of these STR, a support person vessel includes any vessel that is under the control or direction of a person who is or may provide physical or advisory support to a competitor, including the gathering of data that may be used at a later time.
- 1.3 The Organising Authority may inspect a support person vessel at any time to ensure that they comply with these regulations, and the person responsible for the vessel shall facilitate such inspection.
- 1.4 An alleged breach of any of these STR may be referred to the Jury for a hearing under RRS 60.3(d). Note also, action may be taken under RRS 69.
- 1.5 The Organising Authority may change these STR at any time. Any changes will be posted as per NoR/SI 8.1.
- 1.6 All support person vessels and their designated drivers shall register at the Race Office on the first racing day before the first race and collect a Green identification flag as per NoR/SI 20.3 which is to be conspicuously displayed at any time whilst afloat.
- 1.7 Designated drivers of all support person vessels shall attend any Coach or Team Leaders meetings scheduled by the Organising Authority.
- 1.8 The person registering the support person vessel shall confirm that:
 - 1.8.1 A valid insurance certificate showing proof of third-party liability coverage has been obtained; and
 - 1.8.2 Each designated driver has a motorboat-driving license recognised by a national authority appropriate to that vessel or a valid MPA Powered Pleasure-Craft Driving Licence (PPCDL).

2. SAILING VENUE

- 2.1 Support person vessels shall use the areas designated by the Organising Authority for launching and recovery.
- 2.2 Priority for the use of the pontoon within the harbour of the Raffles Marina (RM) Singapore, is reserved for official vessels designated by the Organising Authority or as stated in NoR/SI 20.1. Support person vessels may use the pontoon such as loading and unloading of equipment under the permission of the Organising Authority but shall not interfere with the operations of any official vessels using the pontoon.

3. SAFETY

- 3.1 Life jackets or Personal Floatation Devices shall be worn at all times when afloat. The kill cord shall be securely attached to the driver at all times when the engine is running and in gear.
- 3.2 The maximum plated / certified passenger limits for the vessel shall not be exceeded.
- 3.3 At all times, support persons including the registered driver(s) of a support person vessel shall comply with directions given by or under the authority of a Race Official. This includes assisting in rescue operations when requested to do so. See RRS 1.1.

4 GENERAL RESTRICTIONS

- 4.1 The driver(s) of a support person vessel will be responsible for the control of the vessel at all times and will be held responsible for any inappropriate behaviour, dangerous actions or improper practices, or actions affecting the fairness or safety of the event.

4.2 Support person vessels shall not leave any device, piece of equipment, buoy, marker or similar item permanently in the water. Temporary use of floating objects is allowed for current measurement. These objects shall be removed as soon as the measurement has been taken.

4.3 Support person vessels should take particular care to minimise their wash when transiting the Race Areas.

5. DRONES

The use of drone is prohibited.

6. SUPPORT PERSON VESSELS RESTRICTED AREAS

6.1 Team leaders, coaches and other support persons shall stay outside areas where boats are racing from the time of the preparatory signal for the first start until all boats have finished or retired or the race committee signals a postponement, general recall or abandonment. Such areas are defined as:

- (a) not closer than 50m to any boat racing (*except a boat in distress or requiring assistance*);
- (b) within 50m of the starting line and marks;
- (c) between any boat racing and the next mark of the course;
- (d) between the inner and outer trapezoid courses when boats are racing on both courses;
- (e) within 50m of any mark of the course while boats are in the vicinity of that mark;
- (f) within 50m of the finishing line and marks while boats are finishing; and
- (g) Support person vessel exclusion zone or boundary – 50m outside the area where boats may be racing bounded by all racing marks.

6.2 Support person vessels should proceed around the racing area in such a way to minimise the effect their wash will have on boats racing. Vessels that are motoring above five knots shall remain at least 100m from any boat racing.

6.3 When a Race Committee or Jury member instructs a support person vessel to move further away from the Race Area, the support person vessel shall do so immediately.

