



## SISTERS' ISLANDS MARINE PARK

### INFORMATION FOR MARINAS

### Background

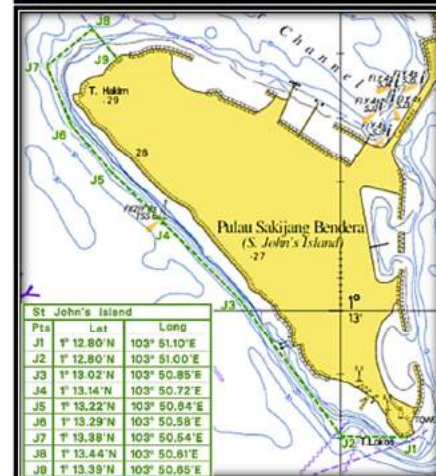
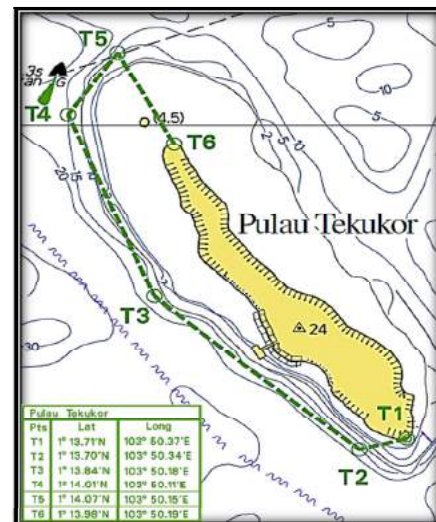
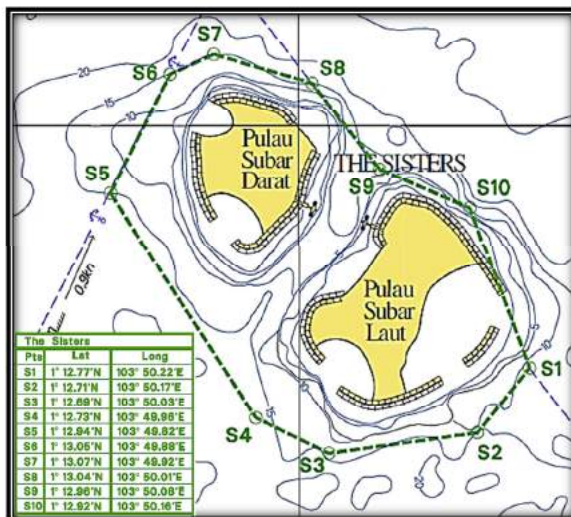
The Sisters' Islands Marine Park is a new initiative announced in June 2014 that aims to give members of the public a first-hand experience of Singapore's rich marine biodiversity. Through this initiative, Singapore's first marine park had been established to protect Singapore's coral reefs, which support an ecosystem inhabited by rare and endangered species of seahorses, clams, sponges and other marine life. The marine park will be a platform for **outreach, educational, conservation** and **research** activities related to our native marine biodiversity.



### Where is the Marine Park?

The Sisters' Islands Marine Park spans about 40 hectares around Sisters' Islands and along the western reefs of both St John's Island and Pulau Tekukor.

The location was chosen due to its variety of habitats including coral reefs, sandy shores and seagrass areas.



Boundaries of the Sisters' Islands Marine Park indicated by the dashed green outlines (S1 to S10 for the Sisters' Islands; J1 to J9 for St. John's Island; T1 to T6 for Pulau Tekukor)



## What's going on at the Marine Park?

Members of the public can participate in the following activities at the Sisters' Island Marine Park:

1) **Learn about Singapore's marine biodiversity at Sisters' Islands Marine Park Public Gallery**

The Gallery features the rich marine biodiversity in Singapore's waters and provides an overview of the Sisters' Islands Marine Park, including a 3D diorama of its dive trails.



2) **Dive at Singapore's first Dive Trail**

Divers will be guided through 20 stations marked by signs which will bring their attention to the variety of marine biodiversity and reef features present in Singapore's waters. Divers can also contribute towards the upkeep of the dive trails, for example by helping to sweep off accumulated algae on the station signboards using cleaning brushes.



3) **Experience the marine biodiversity during the Intertidal Guided Walks**

Members of the public can see the shore teeming with marine life during intertidal guided walks conducted by experienced nature guides from April onwards.



A range of other outreach programmes will also be rolled out to encourage greater appreciation of Singapore's natural heritage.

## More information

Find out more about the activities at Sisters' Islands Marine Park at [www.nparks.gov.sg/sistersislandsmarinepark](http://www.nparks.gov.sg/sistersislandsmarinepark)

Get updates on activities by our volunteers at <http://sistersislandmarinepark.blogspot.sg/> and <https://www.facebook.com/groups/sistersislandsmarinepark/>



## Play your part in protecting the biodiversity in the Marine Park!

By conserving the Sisters' Islands Marine Park, you can help to ensure that the marine animals such as fishes will continue to have a safe environment to reproduce, grow and mature before moving into the open sea. Activities that harm the environment and biodiversity are prohibited within the Marine Park, including the extraction of flora and fauna.

You can play a part in the conservation of Singapore's first marine park by:

- ④ Observing the practices that safeguard the Marine Park and the biodiversity it supports;
- ④ Reporting prohibited activities (Helpline:1800- 471 7300) within the Marine Park boundaries; and
- ④ Sharing about the Marine Park with your family and friends.



No feeding of  
wild animals



No anchoring



No littering



No poaching



No fishing



No casting of  
nets